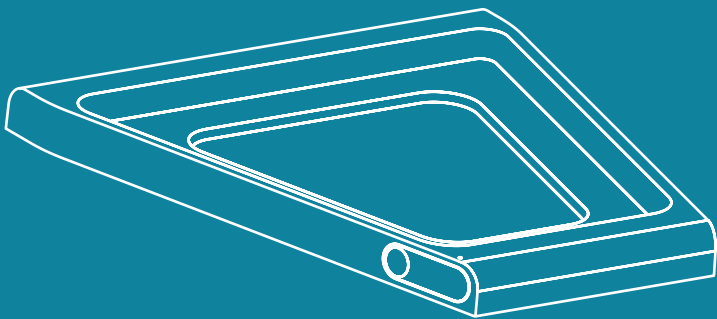


# AQUATru<sup>®</sup>



SLIDING TRAY | MANUAL

# SAFETY INSTRUCTIONS

## WARNING:

**IF NOT OBSERVED, SERIOUS PHYSICAL INJURY OR PROPERTY DAMAGE MAY OCCUR AS A RESULT OF NOT FOLLOWING THE ENCLOSED GUIDELINES.**

- Do not repair, disassemble, or modify.
- This appliance is not intended for use by persons (including children) with reduced physical, sensory or mental capabilities, or lack of experience and knowledge. Use by said persons should be supervised by a person responsible for their safety and thorough instructions concerning the proper use of the appliance should be given.
- Children should be supervised to ensure that they do not play with the appliance.

## READ ALL INSTRUCTIONS BEFORE OPERATING THE AQUATRU SLIDING TRAY

- Use or place the unit on a level area and do not apply force to the it.
- **Not dishwasher safe! Do not submerge in water.**
- Household use only.
- When placing on a kitchen countertop, always avoid placing near hot surfaces like stoves and ovens.

## LET'S GET MOVING!

Remove your AquaTru Tray from its packaging. Make sure to set the tray on a flat, dry and clean surface.

**This tray is compatible with model numbers AT2000, AT2010, AT2020, AT2030, AT2040, AT2050 and AT3000.**

- 1 Place your AquaTru countertop water purifier on the inset area and make sure that the unit is sitting fully inside the tray.
- 2 To unlock the tray and allow it to slide, press in and hold the lever on the side of the tray with the indentation and pull or push the tray to the desired position.

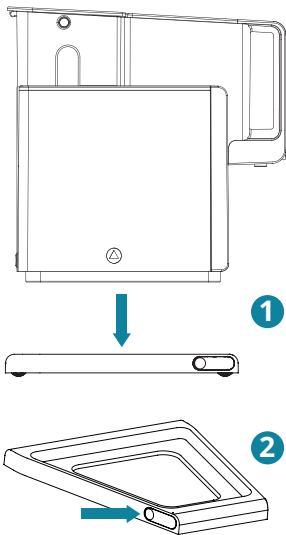
To lock the tray and stop it from moving, release the lever.

### WARNING:

If the AquaTru roller lock stops working at any point, immediately stop using the AquaTru tray, remove the AquaTru from the tray, and contact AquaTru customer service.

### KEEPING IT FRESH AND CLEAN

To clean your AquaTru Tray, remove the AquaTru unit and use a damp cloth. **Not dishwasher safe! Do not submerge in water.**



**Press In:** To Move Tray

**Release:** To Lock Tray

## ONE-YEAR LIMITED WARRANTY

Your AquaTru® Tray is warranted to be free from defects in materials and workmanship for one year from the original purchase date. Should the product have a defect in materials or workmanship, we will repair or replace it without charge to you (a shipping and processing fee will apply). To obtain service under the warranty, simply call our customer service center toll-free at **800.220.6570**.

This warranty does not cover any losses or damages due to misuse, accident, abuse, neglect, normal wear and tear and negligence resulting from failure to maintain and clean this product as specified in this product manual. This warranty applies only to the original purchaser of the AquaTru Tray.

## CONTACT INFO FOR WARRANTY SERVICE:

AquaTru®, LLC

P.O. Box 9169 | Van Nuys, CA | 91409-8291

800.220.6570 | [aquatru.com](http://aquatru.com)

©2022 AquaTru®, LLC. All Rights Reserved.

**AQUATru®**